

Client



Source



Organic Basil, Linalool (*Ocimum basilicum*)

BAL0419

Sample

Organic Basil, Linalool (*Ocimum basilicum*)

Batch #:..... BAL0419

Type:..... Essential Oil

CAS Number:.... 8015-73-4

Natural Sourcing LLC

Client



Website



Primary

61.22%

Linalool

11.34

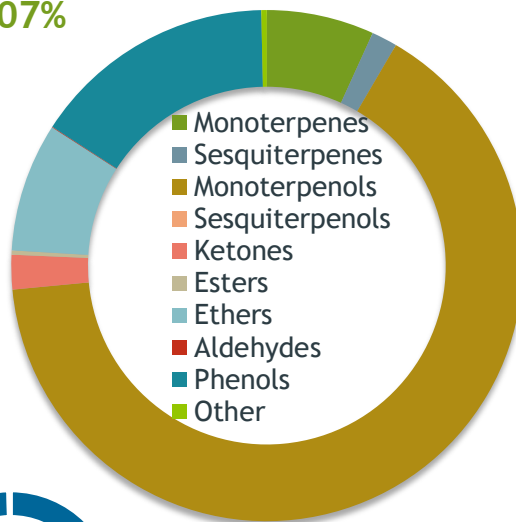
Eugenol

8.11%

1,8-Cineole

Monoterpenols

65.07%



Percentage Identified

Result



Conclusion

No adulterants, diluents, or contaminants were detected via this method. This oil meets the expected profile for genuine Essential Oil of Basil (*Ocimum basilicum*)

Internal Number: | EVS-4146



Essential Validation Services

747 SW 2nd Ave IMB 12 Suite 306
Gainesville, FL 32601

317.361.5044 |
<https://essentialvalidationservices.com/>

Alan Chastain

| | | |
|-----------------|--------|--------|
| Monoterpenes | 6. | 6.80% |
| Sesquiterpenes | | 1.63% |
| Monoterpenols | 65.07% | 65.07% |
| Sesquiterpenols | | 0.00% |
| Ketones | | 2.18% |
| Esters | | 0.27% |
| Ethers | 8. | 8.15% |
| Aldehydes | | 0.04% |
| Phenols | 15.51 | 15.51 |
| Other | | 0.35% |

- Essential Oil testing is performed by using qualitative GC-MS. Method: SOP.T.01 Client Method
 - This report may not be published without the consent of Essential Validation Services.
 - Chromatograph image may be requested
 - This report is valid for 1 year from the analyzed date

Client



NATURAL SOURCING
Cosmetic and Personal Care Ingredient Specialists
PROUDLY SERVING YOU FOR OVER 30 YEARS

Source



Organic Basil, Linalool (*Ocimum basilicum*)

BAL0419

| Total Percentage | | 99.65% | | |
|------------------|-------|--------|-------------------------------------|----------------------|
| Number | RT | Area % | Compound Name | Chemical Family |
| 1 | 8.03 | 0.01% | alpha-Thujene | Monoterpene |
| 2 | 8.29 | 0.90% | alpha-Pinene | Monoterpene |
| 3 | 8.91 | 0.02% | Camphene | Monoterpene |
| 4 | 9.85 | 0.64% | Sabinene | Monoterpene |
| 5 | 10.01 | 0.79% | beta-Pinene | Monoterpene |
| 6 | 10.60 | 0.59% | Myrcene | Monoterpene |
| 7 | 11.14 | 0.04% | Pseudolimonene | Monoterpene |
| 8 | 11.35 | 0.01% | delta-3-Carene | Monoterpene |
| 9 | 11.65 | 0.01% | 1,4-Cineole | Monoterpene Ether |
| 10 | 12.05 | 0.02% | para-Cymene | Monoterpene |
| 11 | 12.15 | 0.03% | alpha-Terpinene | Monoterpene |
| 12 | 12.26 | 1.60% | Limonene | Monoterpene |
| 13 | 12.37 | 8.11% | 1,8-Cineole | Monoterpene Ether |
| 14 | 12.64 | 1.81% | (Z)-beta-Ocimene | Monoterpene |
| 15 | 14.15 | 0.19% | cis-Linalool oxide (5) (furanoid) | Monoterpenol |
| 16 | 14.89 | 0.23% | trans-Linalool oxide (5) (furanoid) | Monoterpenol |
| 17 | 15.75 | 61.22% | Linalool | Monoterpenol |
| 18 | 16.84 | 0.34% | Alloocimene | Monoterpene |
| 19 | 17.30 | 0.02% | trans-Pinocarveol | Monoterpenol |
| 20 | 17.54 | 2.18% | Camphor | Monoterpene Ketone |
| 21 | 17.75 | 0.05% | beta-Terpineol | Monoterpenol |
| 22 | 18.73 | 0.06% | Borneol | Monoterpenol |
| 23 | 19.14 | 0.01% | Terpinen-4-ol | Monoterpenol |
| 24 | 19.64 | 0.27% | (Z)-3-Hexenyl butyrate | Aliphatic Ester |
| 25 | 19.86 | 2.90% | alpha-Terpineol | Monoterpenol |
| 26 | 20.01 | 4.17% | Methyl chavicol | Phenylpropanoid |
| 27 | 20.08 | 0.39% | gamma-Terpineol | Monoterpenol |
| 28 | 21.83 | 0.01% | Neral | Monoterpene Aldehyde |
| 29 | 23.18 | 0.03% | Geranial | Monoterpene Aldehyde |
| 30 | 26.91 | 11.34% | Eugenol | Phenylpropanoid |
| 31 | 29.60 | 0.03% | beta-Caryophyllene | Sesquiterpene |
| 32 | 30.27 | 0.03% | trans-alpha-Bergamotene | Sesquiterpene |
| 33 | 30.86 | 0.08% | allo-Aromadendrene | Sesquiterpene |
| 34 | 31.08 | 1.40% | alpha-Humulene | Sesquiterpene |
| 35 | 34.61 | 0.09% | trans-alpha-Bisabolene | Sesquiterpene |

ESSENTIAL VALIDATION SERVICES | 747 SW 2ND AVE GAINESVILLE, FLORIDA 32601 | 317-361-5044

- Essential Oil testing is performed by using qualitative GC-MS. Method: SOP.T.01 Client Method
 - This report may not be published without the consent of Essential Validation Services.
 - Chromatograph image may be requested
 - This report is valid for 1 year from the analyzed date

