

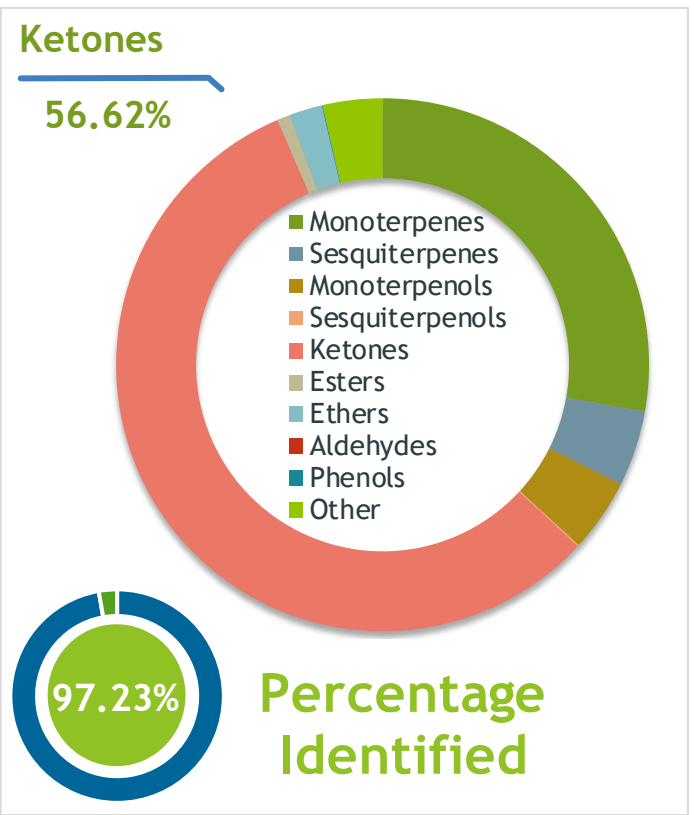
Organic Spearmint (*Mentha cardiaca*)  
Z1516A19

**Client**  **Source** 

**Sample** Organic Spearmint (*Mentha cardiaca*)  
Batch #:..... Z1516A19  
Type:..... Essential Oil  
CAS Number:... 8008-79-5  
**Natural Sourcing LLC**

**Client**  **Website** 

**Primary**  
53.22% Carvone  
22.26% Limonene  
1.99% Menthol



**Result** 

**Conclusion** No adulterants, diluents, or contaminants were detected via this method. This oil meets the expected profile for genuine essential oil of Organic Spearmint (*Mentha cardiaca*)  
Internal Number: | EVS-2862

  
**Essential Validation Services**  
747 SW 2nd Ave IMB 12 Suite 306  
Gainesville, FL 32601  
317.361.5044 | <https://essentialvalidationservices.com/>  
adam@essentialvalidationservices.com  


Monoterpenes	27.82%	27.82%
Sesquiterpenes	4.58%	4.58%
Monoterpenols	4.43%	4.43%
Sesquiterpenols	0.10%	0.10%
Ketones	56.62%	56.62%
Esters	0.77%	0.77%
Ethers	2.01%	2.01%
Aldehydes	0.00%	0.00%
Phenols	0.05%	0.05%
Other	3.62%	3.62%

ESSENTIAL VALIDATION SERVICES | 747 SW 2<sup>ND</sup> AVE GAINESVILLE, FLORIDA 32601 | 317-361-5044

Client



Source



*Organic Spearmint (Mentha cardiaca)*  
Z1516A19

Total Percentage		97.23%			
Number	RT	Area %	Compound Name	RI	Chemical Family
1	11.34	0.06%	2,5-Diethyltetrahydrofuran	895.30	Furan
2	12.23	0.06%	Hashishene	922.00	Monoterpene
3	12.58	0.03%	alpha-Thujene	927.80	Monoterpene
4	12.85	0.69%	alpha-Pinene	936.10	Monoterpene
5	13.21	0.09%	3-Methyl Cyclohexanol		
6	13.50	0.22%	3-Methyl Cyclohexanone	945.00	Aliphatic Ketone
7	14.53	0.46%	Sabinene	973.00	Monoterpene
8	14.66	0.79%	beta-Pinene	974.00	Monoterpene
9	15.06	0.07%	Octan-3-one	981.00	Aliphatic Ketone
10	15.26	1.45%	Myrcene	989.20	Monoterpene
11	15.43	0.54%	3-Octanol	992.00	Aliphatic Alcohol
12	15.81	0.11%	Pseudolimonene	1003.00	Monoterpene
13	16.08	0.02%	delta-3-Carene	1008.00	Monoterpene
14	16.34	0.10%	alpha-Terpinene	1014.00	Monoterpene
15	16.67	0.63%	para-Cymene	1024.30	Monoterpene
16	16.89	22.26%	Limonene	1029.50	Monoterpene
17	16.98	1.75%	1,8-Cineole	1031.80	Monoterpene Ether
18	17.21	0.04%	(Z)-beta-Ocimene	1037.80	Monoterpene
19	17.64	0.13%	(E)-beta-Ocimene	1047.70	Monoterpene
20	18.10	0.28%	gamma-Terpinene	1054.00	Monoterpene
21	18.44	0.25%	trans-Sabinene hydrate	1072.00	Monoterpenol
22	18.66	0.08%	1-Octanol	1075.14	Aliphatic Alcohol
23	19.32	0.69%	Terpinolene	1092.10	Monoterpene
24	19.73	0.12%	Linalool	1099.00	Monoterpenol
25	20.66	0.15%	1-Octenyl-3 acetate	1107.00	Monoterpene Ester
26	21.11	0.08%	cis-Limonene oxide	1136.00	Monoterpene Ether
27	21.28	0.07%	trans-Limonene oxide	1138.10	Monoterpene Ether
28	21.91	0.36%	Menthone	1155.00	Monoterpene Ketone
29	22.33	0.28%	Isomenthone	1164.33	Monoterpene Ketone
30	22.64	1.99%	Menthol	1177.40	Monoterpenol
31	22.83	0.69%	Terpinen-4-ol	1180.57	Monoterpenol
32	23.15	0.08%	p-Cymen-8-ol	1185.25	Monoterpene
33	23.33	0.36%	alpha-Terpineol	1191.71	Monoterpenol
34	23.54	1.42%	cis-Dihydrocarvone	1197.57	Monoterpene Ketone
35	23.84	0.16%	trans-Dihydrocarvone	1203.83	Monoterpene Ketone

ESSENTIAL VALIDATION SERVICES | 747 SW 2<sup>ND</sup> AVE GAINESVILLE, FLORIDA 32601 | 317-361-5044

